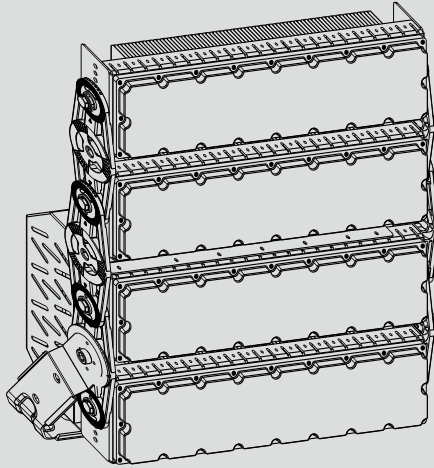


# USER MANUAL



## DANGER

Warning against hazards that may result in material damage in case of non-observance.

## CAUTION

Risk of injury caused by a falling luminaire.

In case of improper mounting, the luminaire or luminaire elements may fall down and cause personal injuries and material damage.

- X The installation must be performed by a trained skilled electrician only.
- X Mount only on a ceiling which is suitable for mounting.
- X Use suitable screws and dowels only.
- X Use only the delivered fastening elements or other suitable fastening elements available from the manufacturer.
- X Mount all securing elements.

## WARNING

Risk of electrocution due to live components.

In case of incorrect connection, the housing of the luminaire or the wire ropes may carry electric voltage and cause severe injuries.

- X Have the luminaire connected by a skilled electrician only.
- X The luminaire must be connected to a mains supply with protective earth conductor.
- X Connect the grounding cable mounted on the holding plate to the protective earth conductor terminal.

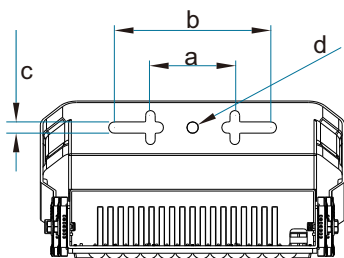
## NOTICE

Material damage if the admissible total power consumption is exceeded.

Damage or destruction of the luminaire.

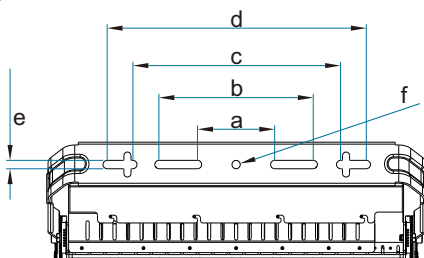
- X Do not daisy chain more than six luminaires.

## INSTALLATION

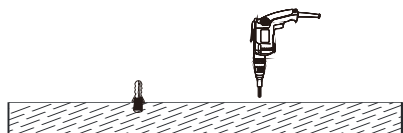


unit: mm	a	b	c	d
250W/500W	99	180	13	13

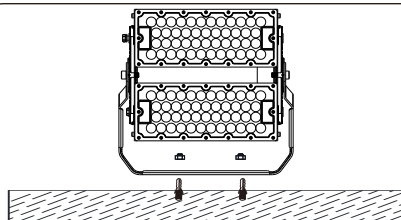
Dimension of the bracket



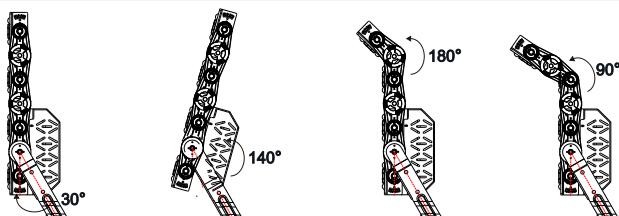
unit: mm	a	b	c	d	e	f
750W/1000W	120	240	323	403	13	13
1200W/1500W	120	240	323	403	13	13



Punch in the pole and install the screw



Fix the fixture on the pole



Adjust the angle of bracket

## WIRING

### Wiring(standard)

- Connect the blue wire and brown wire to the "N" and "L" respectively, yellow-green wire to the ground wire. Confirm correct connection.
- Connect the white wire and black wire to the "DIM +" and "DIM -"
- Confirm correct connection.

